

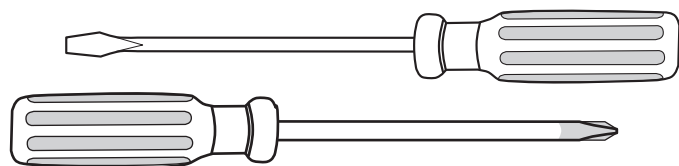
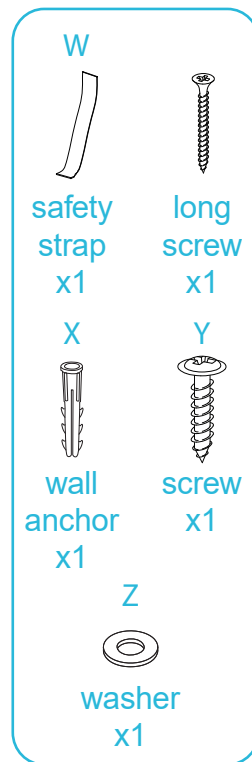
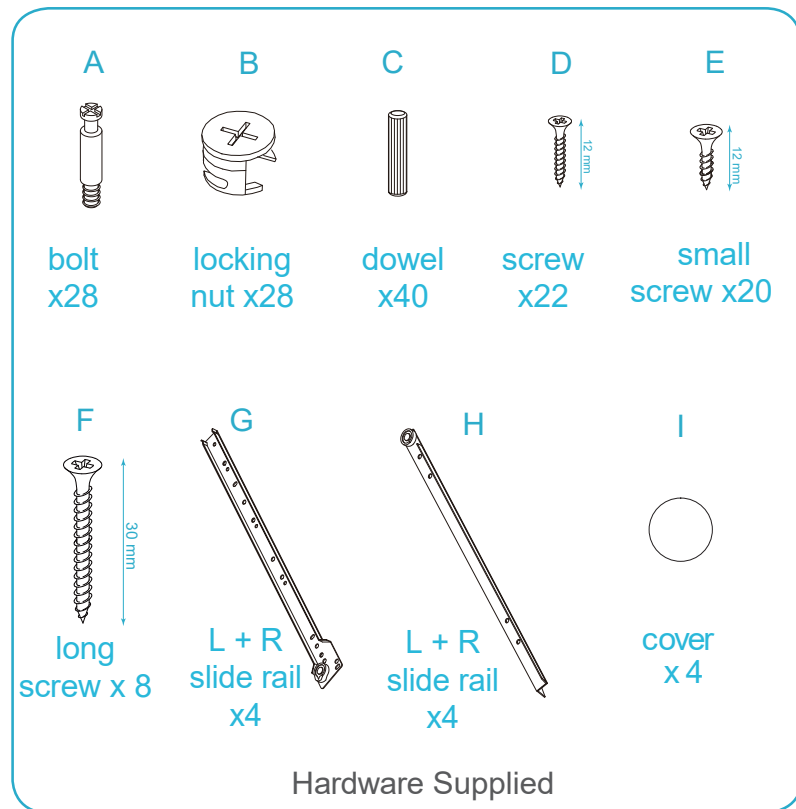
# Brooklyn Change Table

## Assembly Instructions

Thank you for your purchase.

Please follow the instructions below for correct assembly.

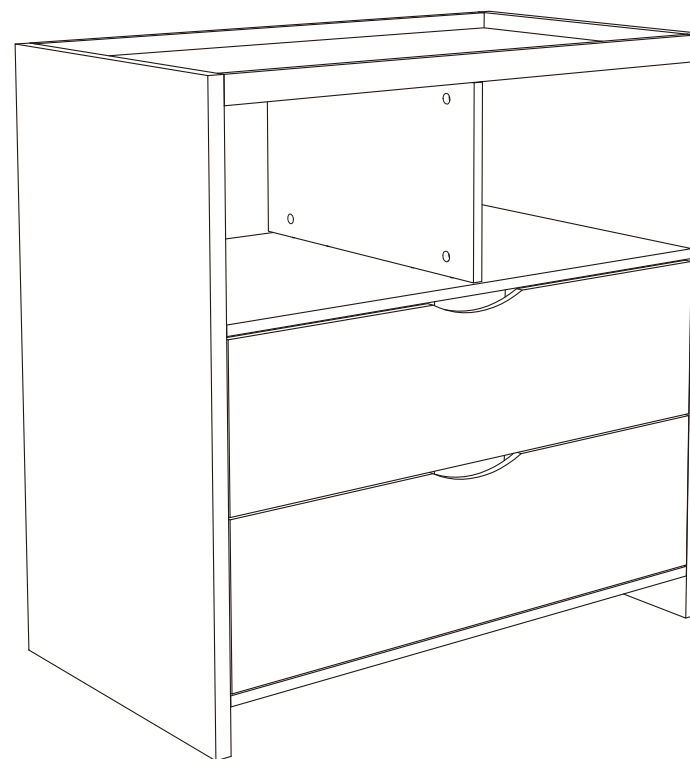
# mocka



Phillips & Flathead screwdrivers and hammer required

**WARNING:** Any furniture that is not anchored to a wall has the potential to tip over in certain circumstances, i.e. if a child attempts to climb up on the furniture or in the event of an earthquake. Accordingly, we recommend that all furniture is anchored to a wall. We supply a free safety wall anchor with all furniture sold and we recommend these are used to prevent your product tipping. The fixing device provided should fit most wall types, but please note that different wall materials may require different fixing devices from those supplied.

**WARNING:** Never leave a child unattended on the change table.



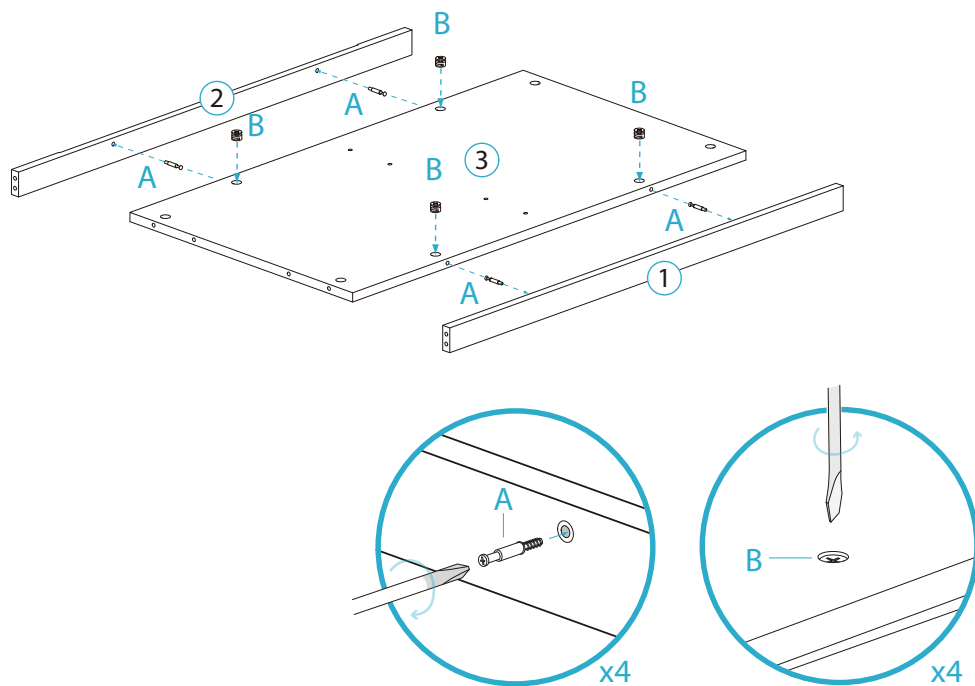
\*We recommend using a Flathead screwdriver to tighten all locking nuts 100% before first use.

# Brooklyn Change Table

## Assembly Instructions

Thank you for your purchase.  
Please follow the instructions below for correct assembly.

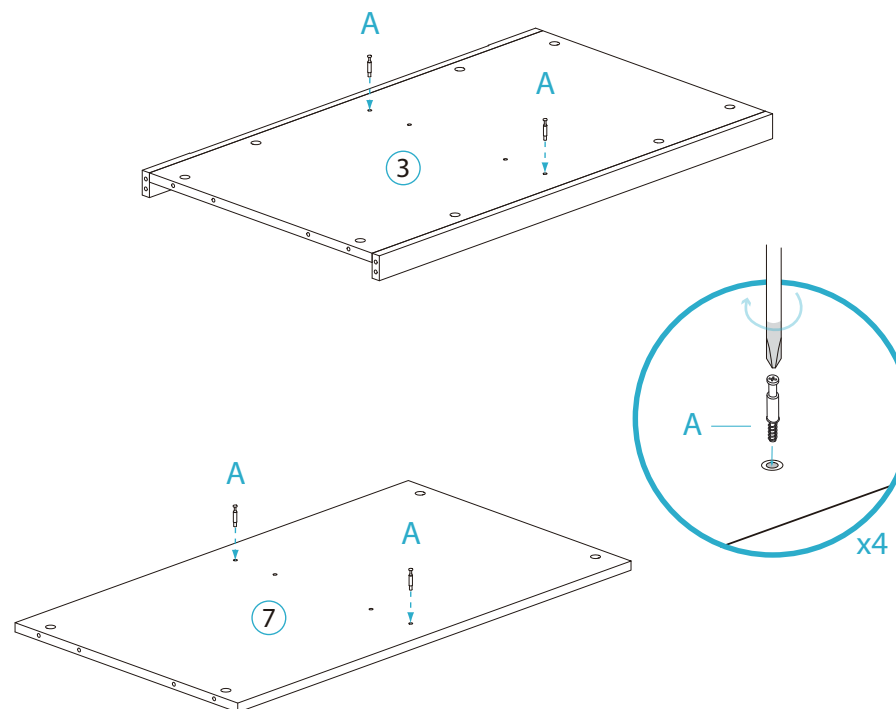
# 1



Attach 4 x bolt (A) to panel [1] and [2]. Insert 4 x locking nut (B) into panels [3]. Tighten with a screwdriver.

# mocka

# 2



Insert 4 x bolt (A) into panels [3] and [7]. Tighten with a screwdriver.

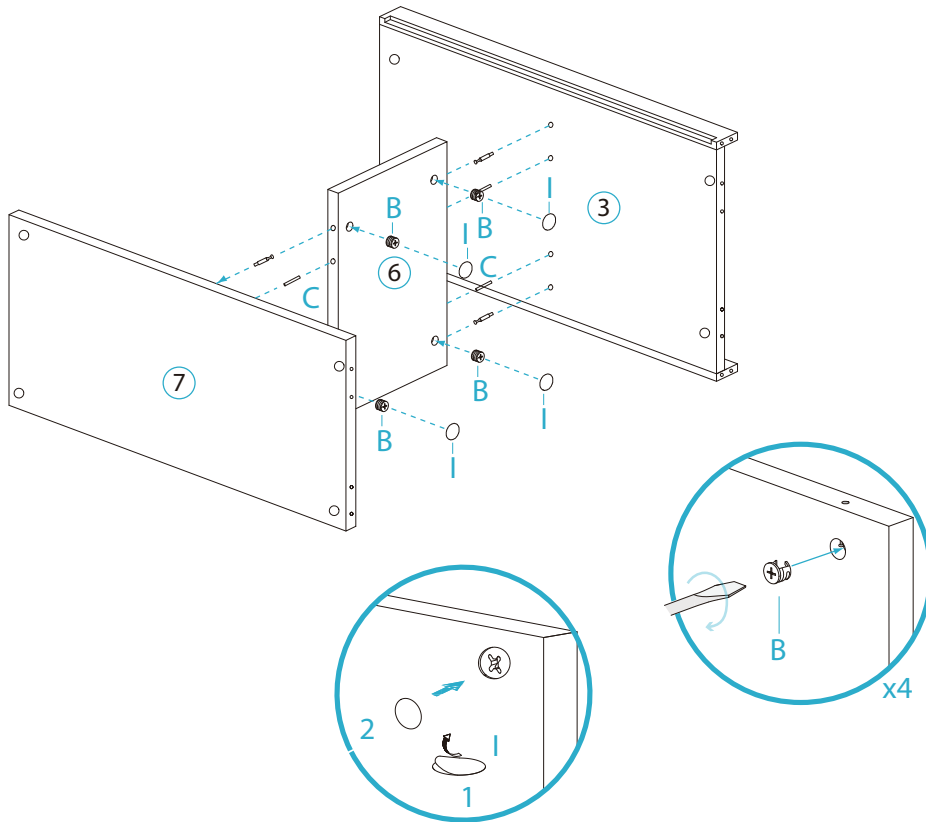
# Brooklyn Change Table

## Assembly Instructions

Thank you for your purchase.  
Please follow the instructions below for correct assembly.

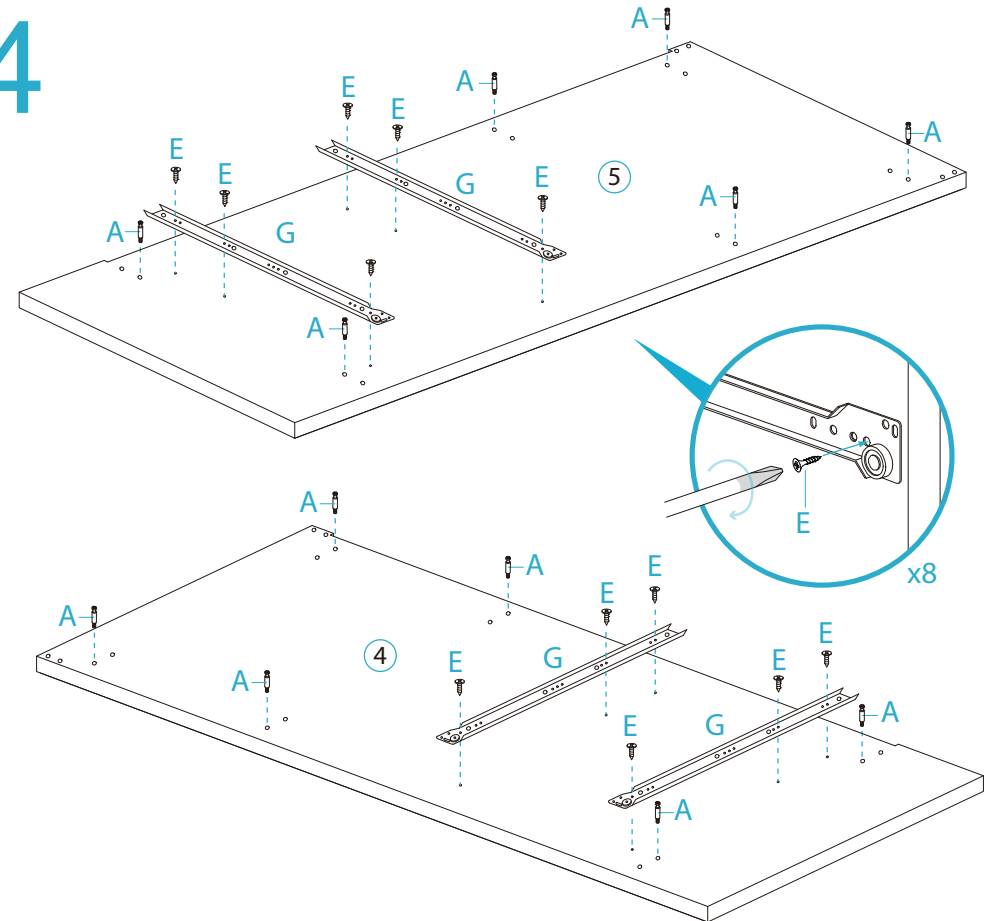
mocka

3



Insert 4 x locking nut (B) into panels [6] . Attach 4 x dowel (C) to panel [3] and [7]. Cover locking nuts (B) with 4 x covers (I).

4



Attach 2 x left slide rail (G) to panel [4] and secure with 6 x small screw (E). Attach 2 x right slide rail (G) to panel [5] and secure with 6 x small screw (E). Insert 12 x bolt (A) into panel [4] and [5]. Tighten with a screwdriver.

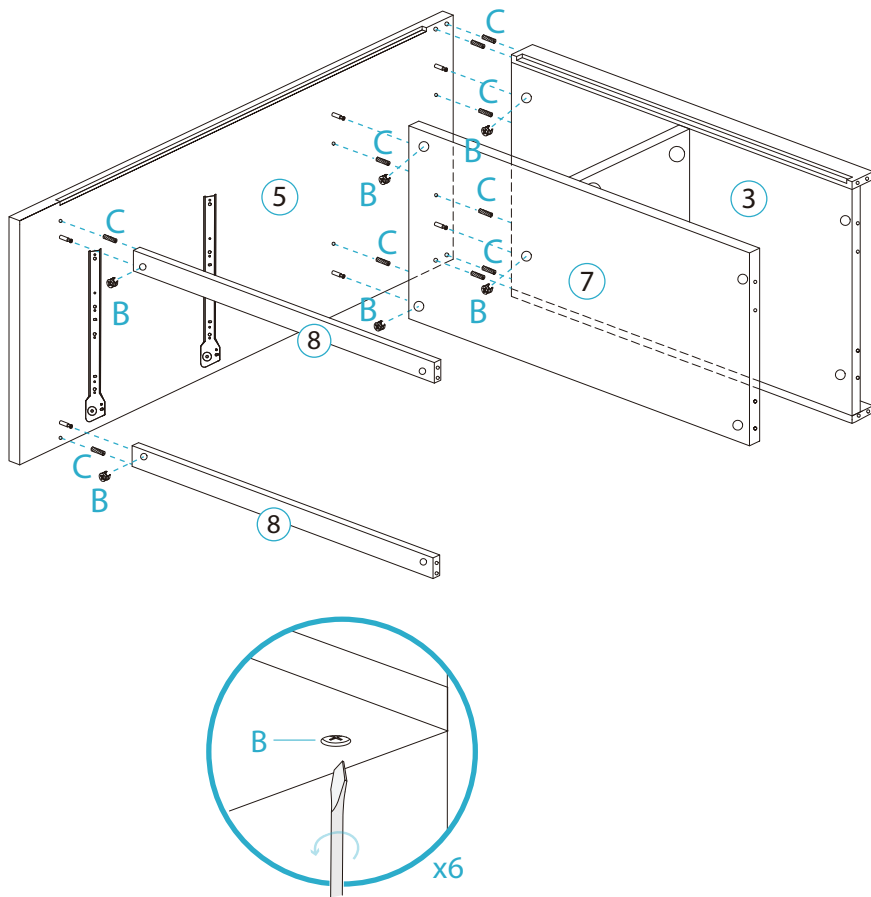
# Brooklyn Change Table

## Assembly Instructions

Thank you for your purchase.  
Please follow the instructions below for correct assembly.

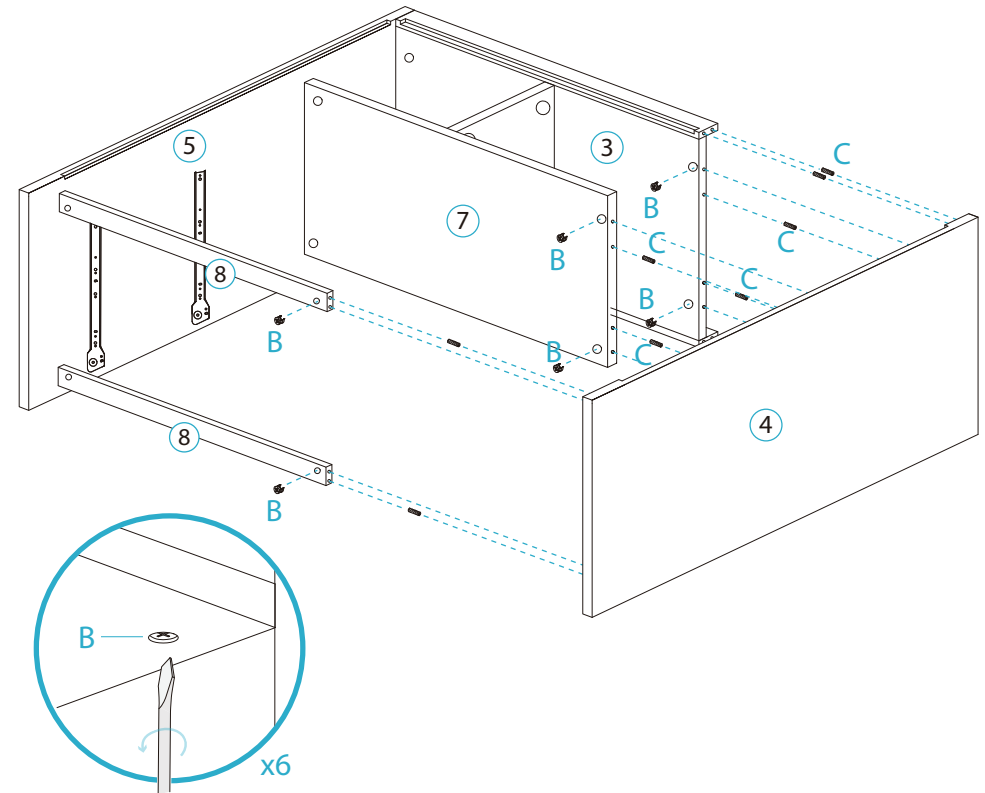
mocka

5



Insert 6 x dowel (C) into panel [3] and [7] and [8] . Attach panel [3] to panels [7] and [8] and secure with 6 x locking nuts (B). Tighten with a screwdriver.

6



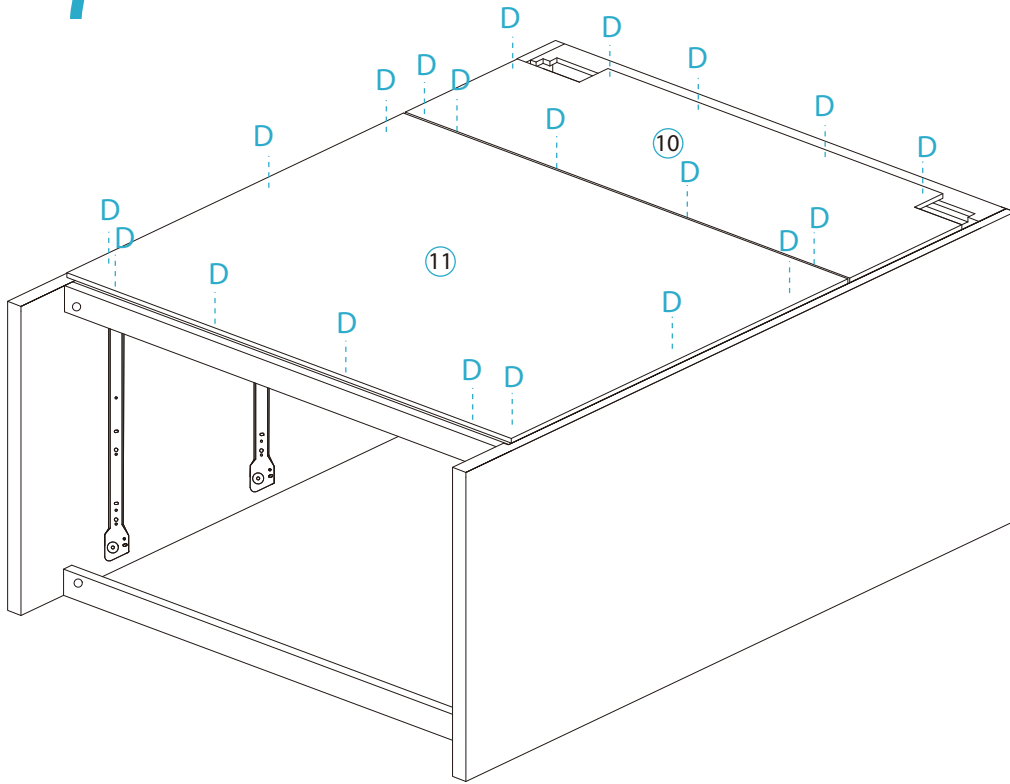
Insert 6 x dowel (C) into panel [3] and [7] and [8] . Attach panel [3] to panels [7] and [8] and secure with 6 x locking nuts (B). Tighten with a screwdriver.

# Brooklyn Change Table

## Assembly Instructions

Thank you for your purchase.  
Please follow the instructions below for correct assembly.

# 7

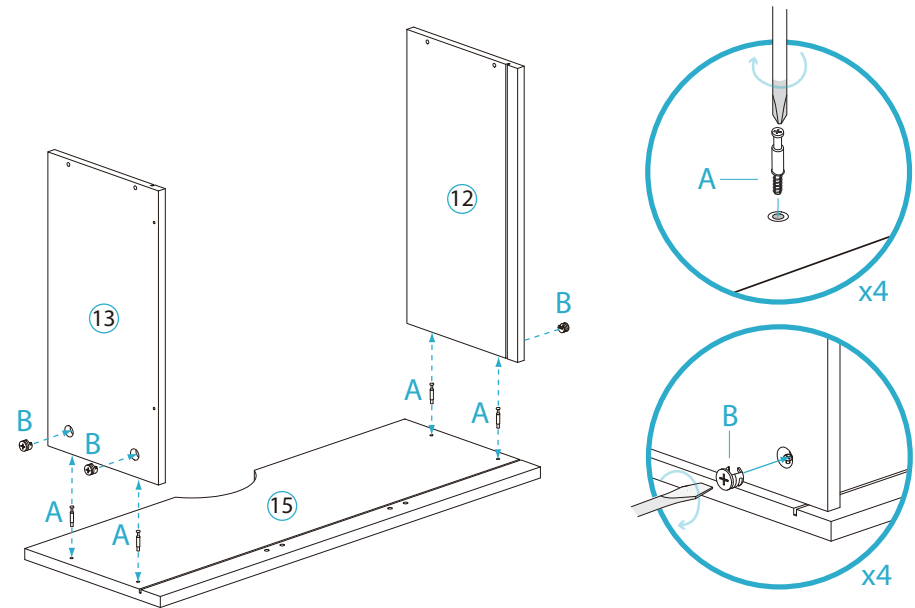


On the back side of the set, fit boards [10] and [11] into the grooves. Use small 20x screws (D) all around to fasten boards to the change table unit.

# mocka

# 8

## Drawers (x2)



To assemble the drawers, first screw 4x bolts (A) into front panel [15]. Fit panels [12] and [13] over the bolts as shown, ensuring the grooves in panels face inwards. Secure using 4x locking nuts (B) and tighten with a screwdriver.

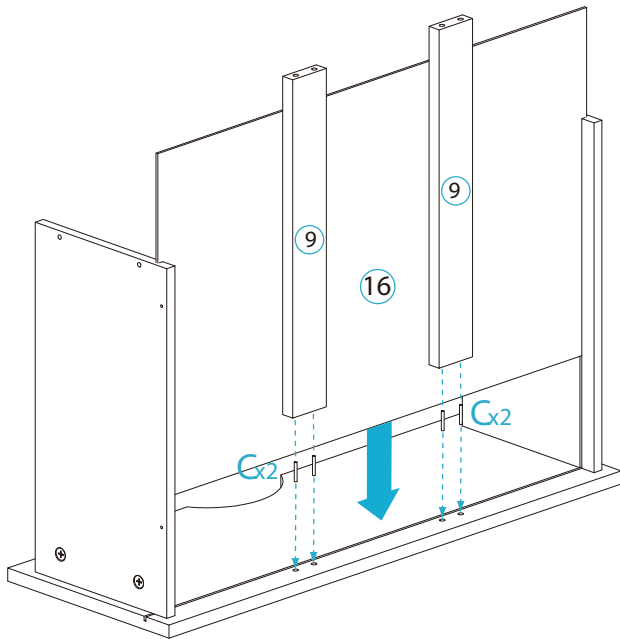
# Brooklyn Change Table

## Assembly Instructions

Thank you for your purchase.  
Please follow the instructions below for correct assembly.

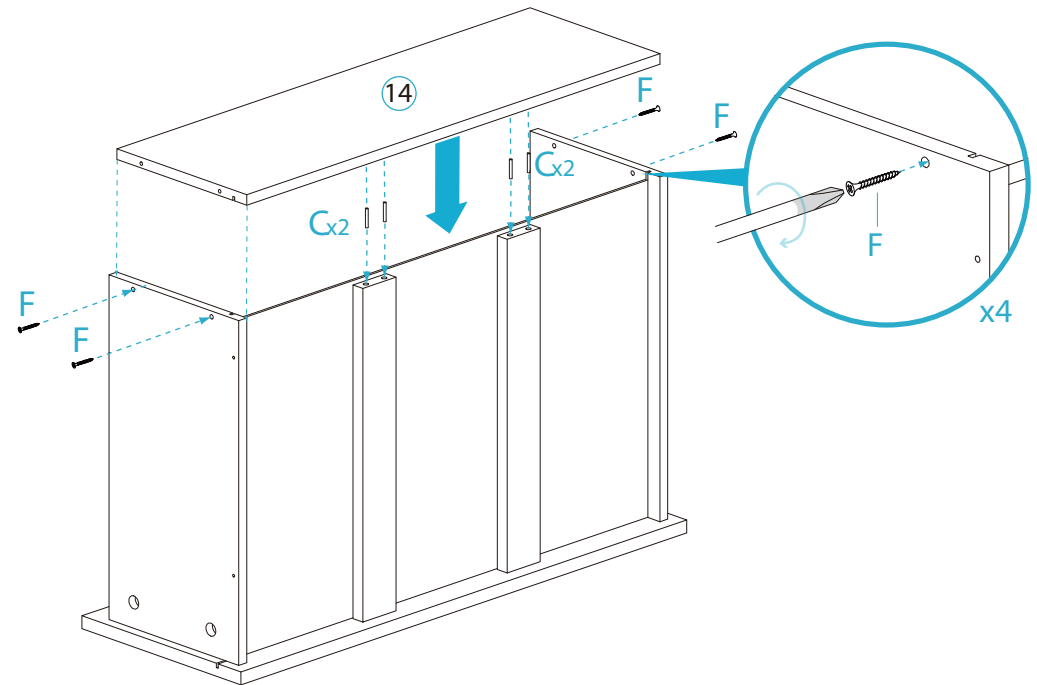
mocka

### 9 Drawers (x2)



Slot panel [16] down into grooves in the side and front panels. Insert 2x dowels (C) into the end of both support braces [9] and peg into holes in front panel [15].

### 10 Drawers (x2)



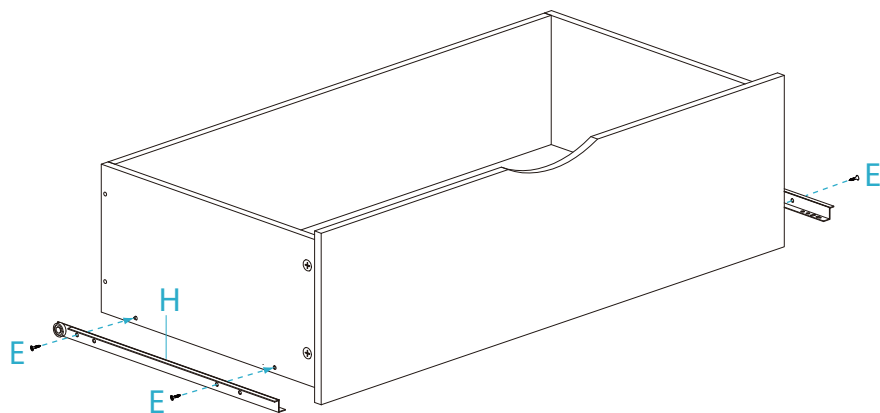
Insert 2x dowels (C) into the other end of each support piece [17]. Place back panel [14] into position on dowels and fasten into place using 4x screws (F).

# Brooklyn Change Table

## Assembly Instructions

Thank you for your purchase.  
Please follow the instructions below for correct assembly.

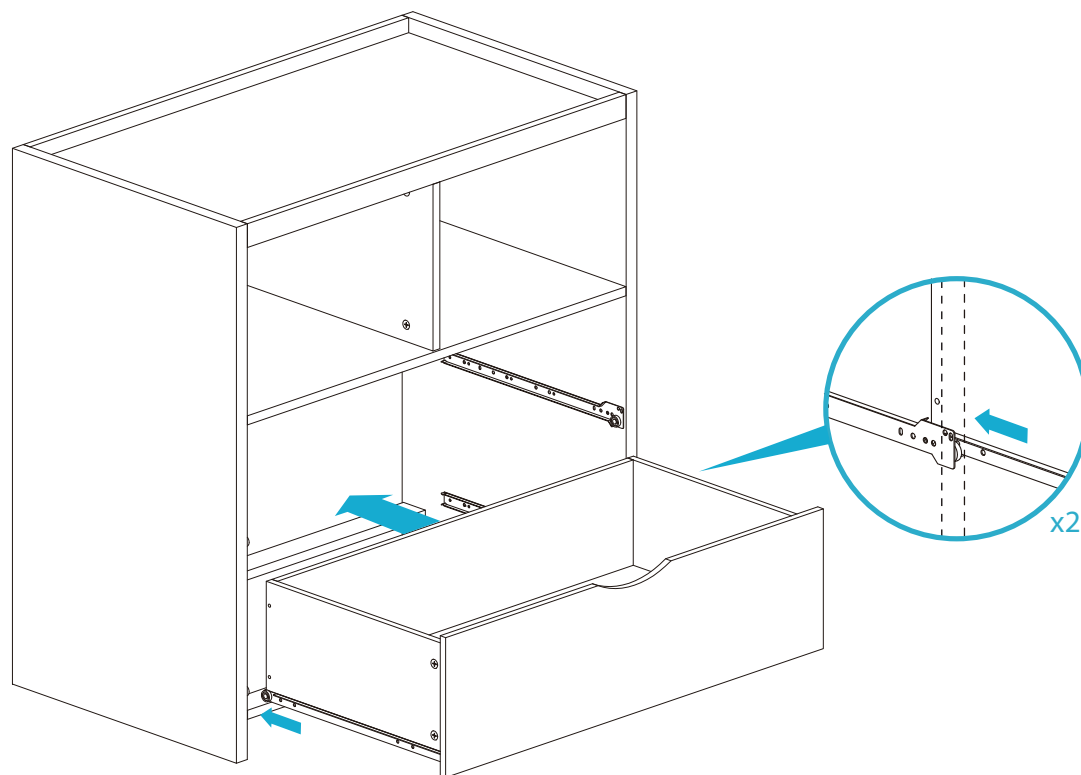
### 11 Drawers (x2)



Finally, attach rail hardware (H) to both left and right side of the drawer using screws (E). Repeat Steps 7 to 10 until all four drawers are fully assembled.

mocka

### 12



Now both drawers are made up, slide them into rails in the change table unit.

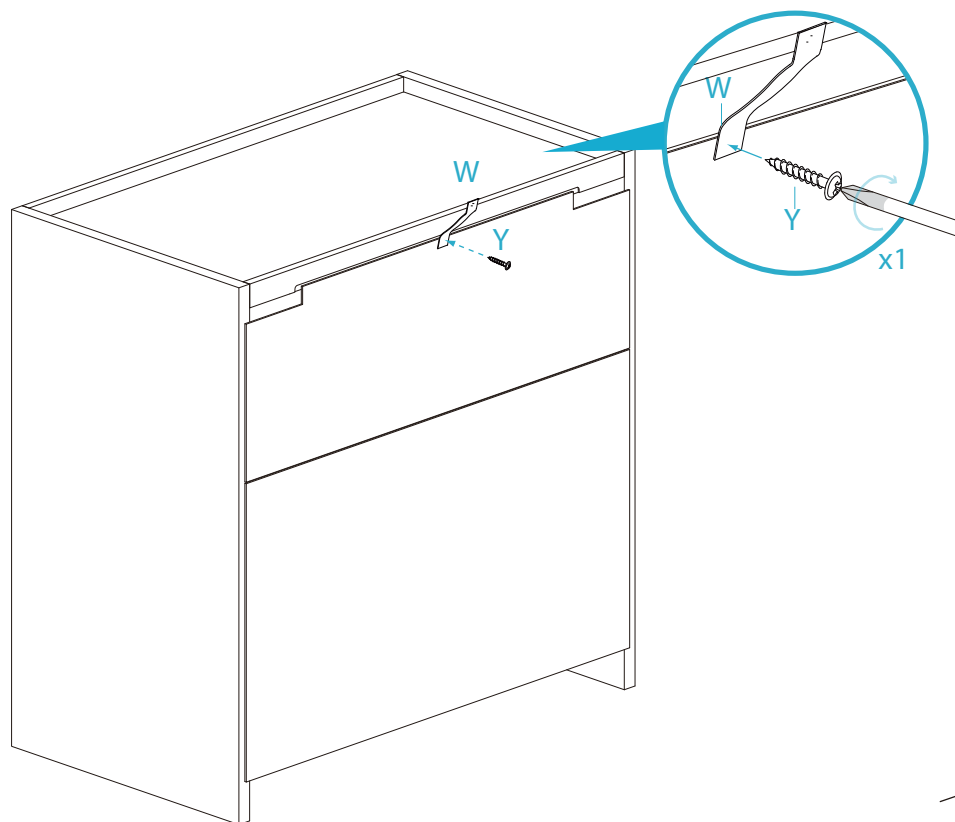
# Brooklyn Change Table

## Assembly Instructions

Thank you for your purchase.  
Please follow the instructions below for correct assembly.

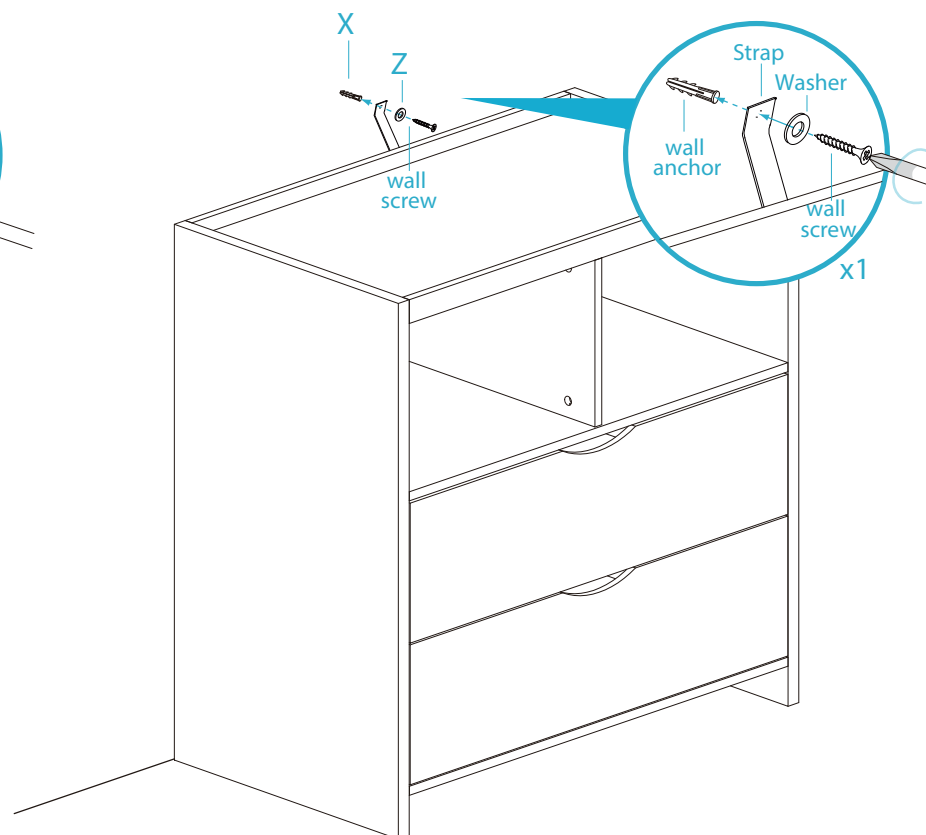
mocka

### 13 Wall Strap



Attach the safety strap (W) to the top of the back side of the unit using screw (Y). Tighten with a screwdriver.

### 14



Once assembled lift furniture into place, do not drag. Use a drill to create a small hole lining up with the top of the safety strap (W). Fasten to wall using wall anchor (X), washer (Z) and screw. Ensure the unit is balanced and steady before use. You're done, enjoy!

Attach the safety strap (W) to the top of the back side of the unit using.